

*Fifty Five*  
Greek St.



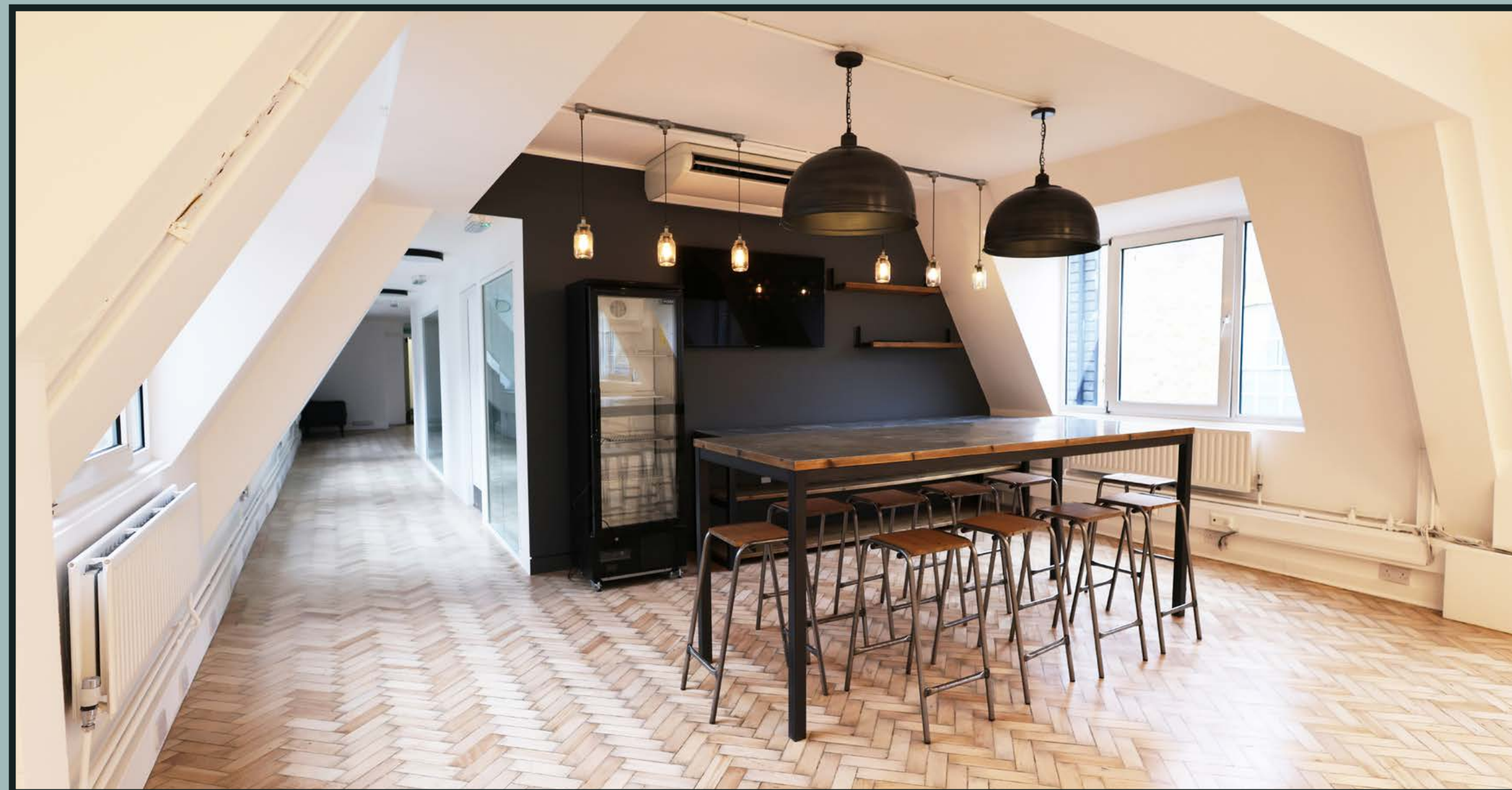
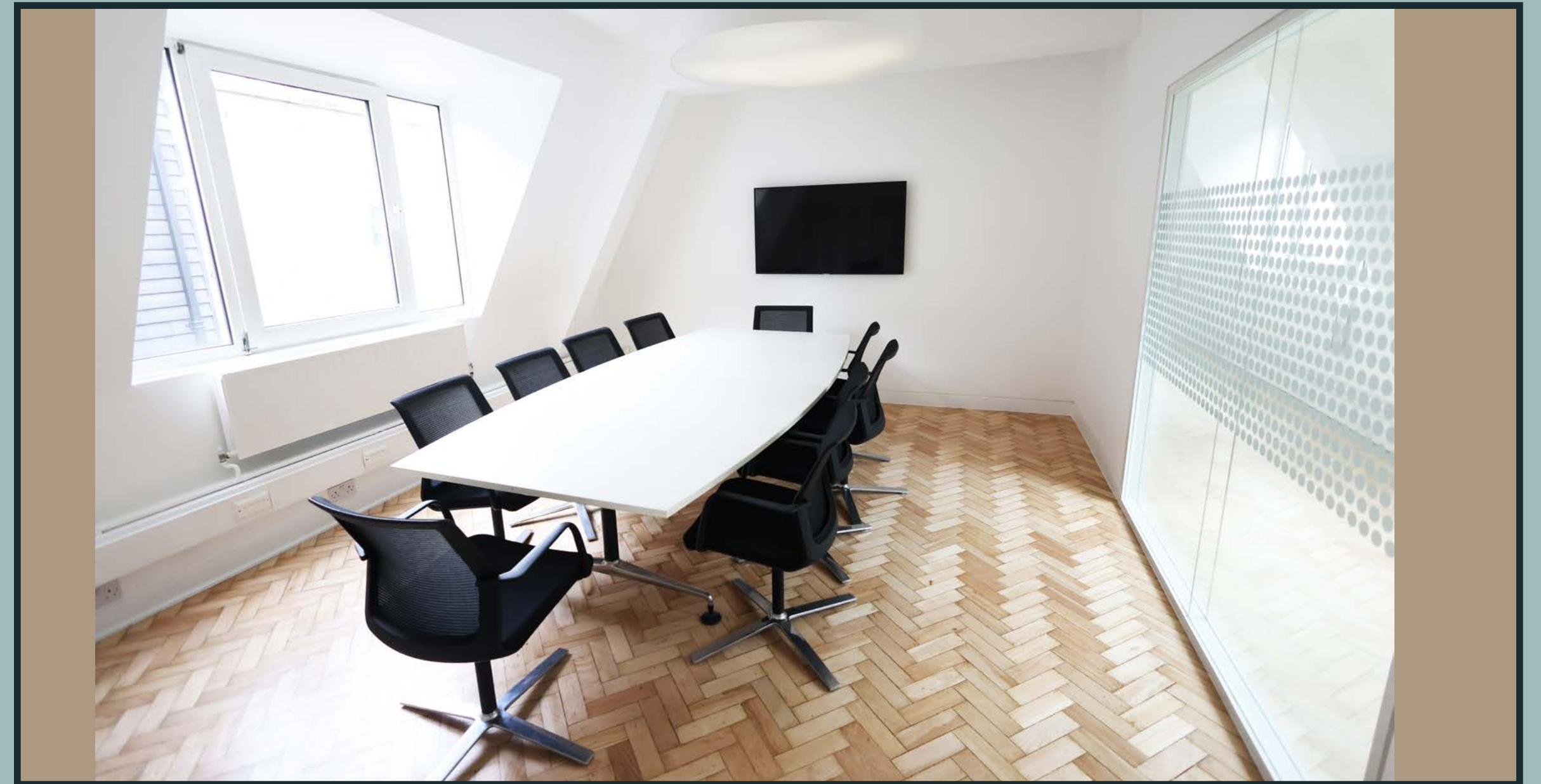
Soho | W1D



# *Greetings from Fifty Five*

---

We have the newly refurbished third floor available which is fully fitted. The space is bursting with character owing to the parquet wooden flooring and bespoke bar area. The current layout includes a welcome area at the front giving swift access to the meeting rooms with the open plan desk area behind.







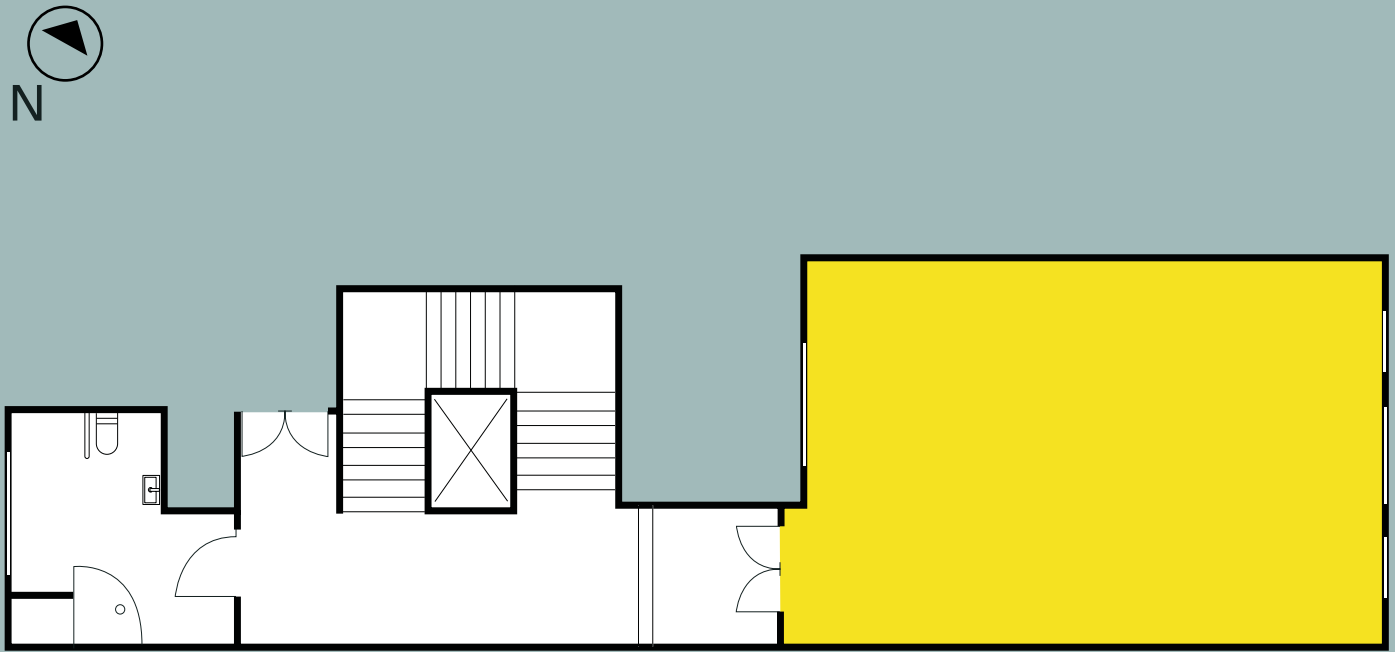


# Availability

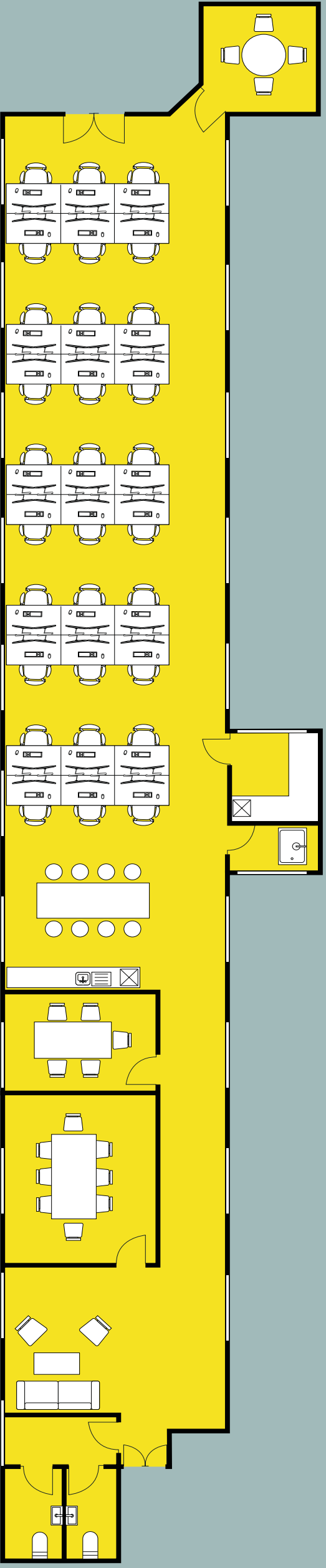
FLOOR	SQ M	SQ FT
3RD	223.20	2,402
1ST	49.7	535

Terms: new lease available direct from the landlord.

 Office space



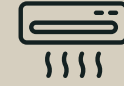
First floor



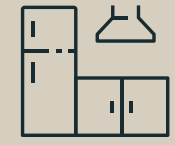
Third Floor



# Specification



Comfort cooling



Kitchenette



Fully fitted including 30 desks



Bar area and breakout space



Welcome area



Parquet wooden flooring



Board room and additional Meeting room



Demised WC's and shower



Cable network perimeter distribution



Bike storage



EPC B



Prime Location



# Greetings from Greek St

---

55 Greek Street is in the heart of Soho, which hosts abundant cafes, bars and restaurants in one of London's most vibrant districts. Whether you're looking for a trendy boutique or big brands, Soho has it all! The building has excellent transport connectivity being only a 4-minute from Tottenham Court Road Station which provides links across London via Central, Northern and Elizabeth Lines.





# The Area



# Drop us a line

**RUBIX**



*Harry Radcliffe*

E: [harry@rubix.london](mailto:harry@rubix.london)  
M: +44(0)7796 217 354

*Jake Stace*

E: [jakestace@brayfoxsmith.com](mailto:jakestace@brayfoxsmith.com)  
M: +44(0)7597 685 889

*Oliver Hawking*

E: [oliver@rubix.london](mailto:oliver@rubix.london)  
M: +44(0)7714 145 970

*Rob Skioldebrand*

E: [robertskioldebrand@brayfoxsmith.com](mailto:robertskioldebrand@brayfoxsmith.com)  
M: +44(0)7769 725 412

Disclaimer - Rubix Real Estate Ltd for themselves and for the vendors or lessors of this property whose agents they are given notice that:- (1) The particulars are set out as a general outline for the guidance of the intending purchasers and do not constitute part of an offer or contract; (2) All descriptions, dimensions, references to condition and necessary permissions for use and occupation and other details are given without responsibility and any intending purchasers should not rely on them as standards or representations of fact but must satisfy themselves by inspection or otherwise as to the correctness of each of them; (3) No persons in the employment of Rubix Real Estate Ltd has any authority to make or give any representation or warranty whatsoever in relation to this property.